



**ALASKA DIVISION OF HOMELAND SECURITY &
EMERGENCY MANAGEMENT**



SITUATION REPORT 20-314 • Nov 09, 2020

Toll-Free 1.800.478.2337

Anchorage Area 907.428.7000

SEOC 907.428.7100

<p><u>SEOC Preparedness Level</u> Level 2 Heightened Awareness – For COVID-19 Response</p>	<p>http://ready.alaska.gov</p>	<p><u>National Terrorism Advisory System:</u> View this site for the latest NTAS bulletin: read the current NTAS Bulletin here.</p>
<p><u>Maritime Security (MARSEC)</u> Level:1-Minimum Appropriate Security Measures</p>	<p>WHO Novel Coronavirus Pandemic (COVID-19): 2019 Novel Coronavirus</p>	<p><u>Alaska Military Installation Force Protection Level:</u> FPCON Bravo</p>

(Significant changes from previous situation reports are in red.)

THREAT LEVEL CHANGES: None.

Significant Issues

Operations:

The Alaska Earthquake Center recorded two earthquakes on Saturday, November 7, that were widely felt in Southcentral Alaska. At 3:23 am a magnitude 5 occurred 16 miles southeast of Willow and at 6:03 am. a magnitude 4.4 occurred 16 miles west of Wasilla. A precautionary earthquake inspection of bridges in the area was conducted by the Alaska Department of Transportation and Public Facilities, but no significant damage was found. SEOC has not received any reports of damage from these earthquakes.

A strong fall sea storm late last week caused widespread impacts to communities along the Seward Peninsula. The most severe impacts have been reported in the City of Shishmaref who reported the recent high winds, strong surf, and storm surge have damaged the Shishmaref Sanitation Road. This shoreline road parallels the runway and connects the community with the landfill. Approximately ¼ - ½ mile of the has been heavily damaged or lost prohibiting vehicle access to the landfill. The City intends to construct a temporary access road along the south side of the airport property to the landfill. There are no reports to homes, community facilities, or critical infrastructure – although a complete assessment has not yet been made.

Coronavirus (COVID-19) Pandemic:

A unified command has been established at the SEOC. The SEOC continues to support statewide response to COVID-19.

State of Alaska Department of Health and Social Services (DHSS)

DHSS is operating as the Medical Branch under the State EOC/Unified Command.

For more information about the outbreak refer to:

<https://covid19.alaska.gov/>

<https://www.cdc.gov/coronavirus/2019-ncov/index.html>

The Alaska DHSS website is located at <http://dhss.alaska.gov/Pages/default.aspx>

NTAS BULLETIN:

To read current advisories, select the link below.

<https://www.dhs.gov/national-terrorism-advisory-system>

Travel Alerts and Conditions

COVID-19 Health Mandates may affect travel. Check <https://covid19.alaska.gov/> for current Health Mandates.

For current driving conditions dial 511 or link to <http://511.alaska.gov/>

Recent Earthquakes

USGS Earthquake Information: <http://earthquake.usgs.gov/>

National Tsunami Warning Center: <http://ntwc.arh.noaa.gov/>

Alaska Volcanoes

Korovin Alert Level: Advisory and Aviation Color Code: Yellow

Semisopchnoi Alert Level: Advisory and Aviation Color Code: Yellow

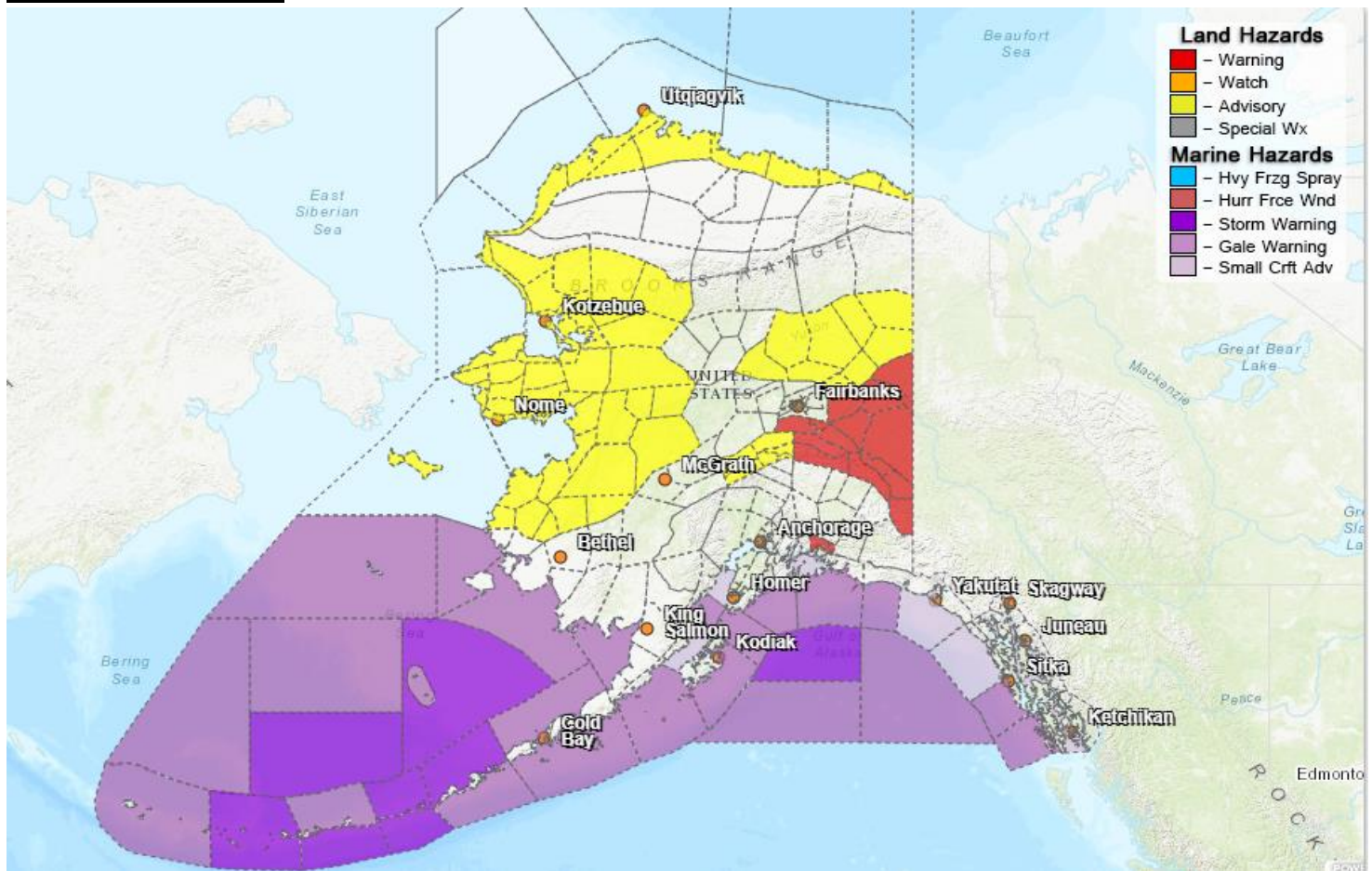
For Alaska Volcano updates, go to: <https://www.avo.alaska.edu/>

Air Quality Index (AQI) Advisories

For the most up to date Air Quality Index Advisories:

<http://dec.alaska.gov/Applications/Air/airtoolsweb/Home/Index>

Significant Weather:



A Blizzard Warning is in effect until 1:00 P.M. today for Northeast Prince William Sound. Total snow accumulations of up to one inch with winds gusting as high as 70 mph in the area of Thompson Pass are expected.

A Winter Weather Advisory is in effect until 6:00 A.M. Tuesday for the Chukchi Sea Coast, Northern & Interior Seward Peninsula. 9:00 A.M. for the Yukon Valley and Lower Koyukuk Valley. 3:00 P.M. for the Lower Kobuk and Noatak Valleys & the Baldwin Peninsula and Selawik Valley. 6:00 P.M. for the Western Arctic Coast and 12:00 A.M. for Northern Arctic Coast and Beaufort Sea Coast. Snow and blowing snow expected. Total snow accumulations of 2 to 4 inches, with localized amounts up to 6 inches, are expected.

A High Surf Advisory is in effect until 3:00 P.M. Tuesday for the Yukon Delta. 6:00 P.M. for the Southern Seward Peninsula Coast, Eastern Norton Sound and Nulato Hills, St Lawrence Island, and Bering Strait Coast. 9:00 P.M. for Chukchi Sea Coast, Baldwin Peninsula, and Selawik Valley. Waves and surf 2 to 5 feet above the normal high tide line are expected.

A Winter Storm Warning is in effect until 3:00 P.M. today for the Upper Tanana Valley, Fortymile Country, and the Eastern Alaska Range. Heavy snow accumulations of 2 to 4 inches are expected in the area.

A Special Weather Statement is in effect until 10:15 A.M. today for the Western Coast of Alaska. A short period of elevated water is forecasted for the Yukon Delta, Norton Sound, and the Chukchi Sea coast, Monday night and Tuesday. Water levels will be 2 to 5 feet above the high tide line depending on location. Near Kotlik, localized flooding may occur along the Yukon River.

For more information and the most current weather, Watches / Warnings / Advisories go to:
<http://www.weather.gov/arh/>

For Fire weather: <https://fsapps.nwccg.gov/psp/npsg/forecast/#/outlooks?state=map&gacclid=1>

Spills of Oil and Hazardous Substances

The ADEC Spill Prevention and Response page is located at:

<http://dec.alaska.gov/spar/ppr/spill-information/response/>

Alaska Cyber Security Information

State Employees may sign up for cybersecurity notifications and alerts at

<https://oit.alaska.gov/Security>

The Next Situation Report: will be 10 November 2020. A significant change in the situation or the threat level will prompt an interim report.

This report is posted on the internet at <https://ready.alaska.gov/sitrep>. To register for email distribution, go to <http://list.state.ak.us/mailman/listinfo/dhsem.situation.report>. Direct questions regarding this report to the SEOC at 907-428-7100 or seoc@alaska.gov.